

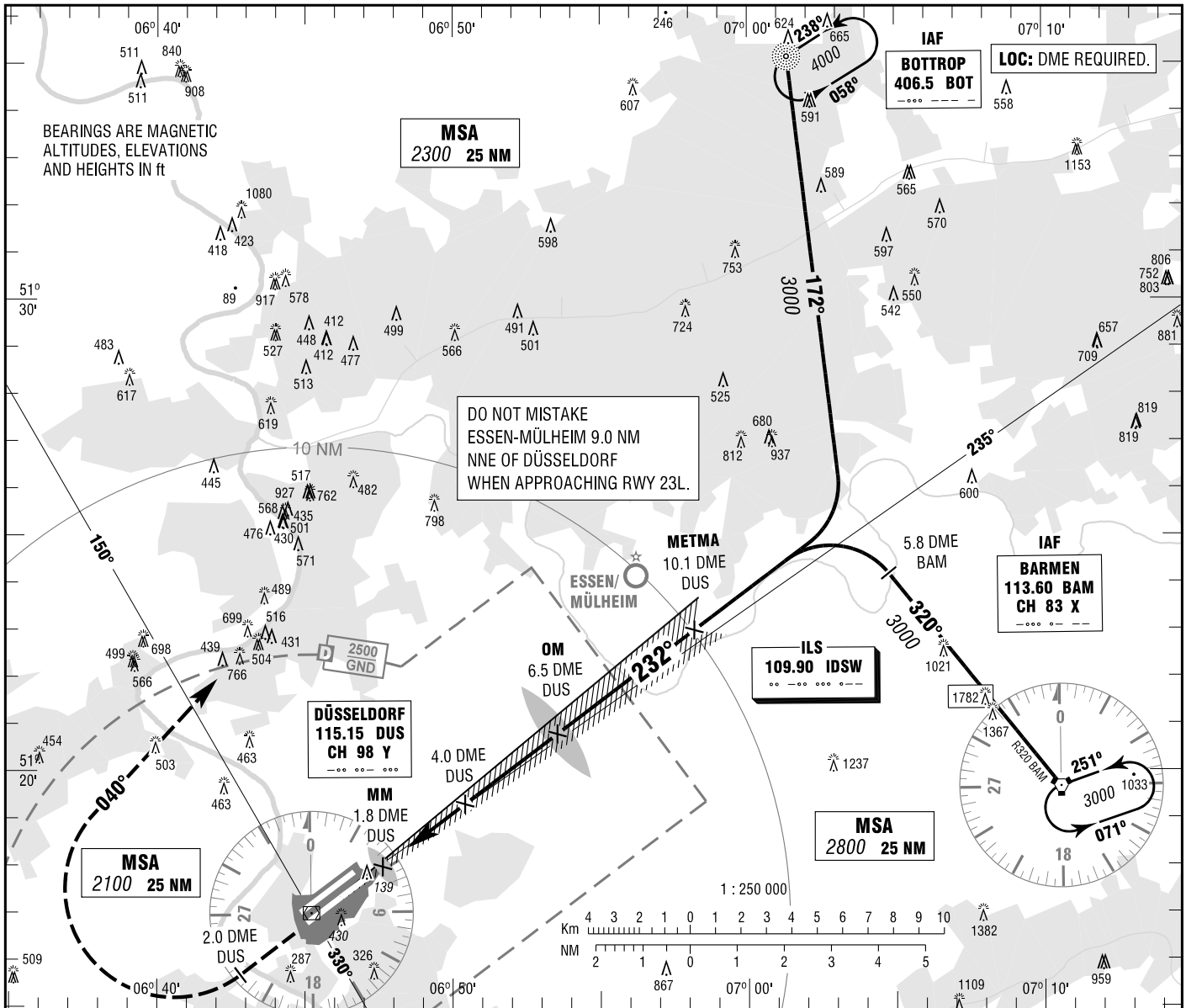
INSTRUMENT
 APPROACH
 CHART - ICAO

VAR 1° E

ELEV 147
 OCH RELATED TO
 THR 23L ELEV 138

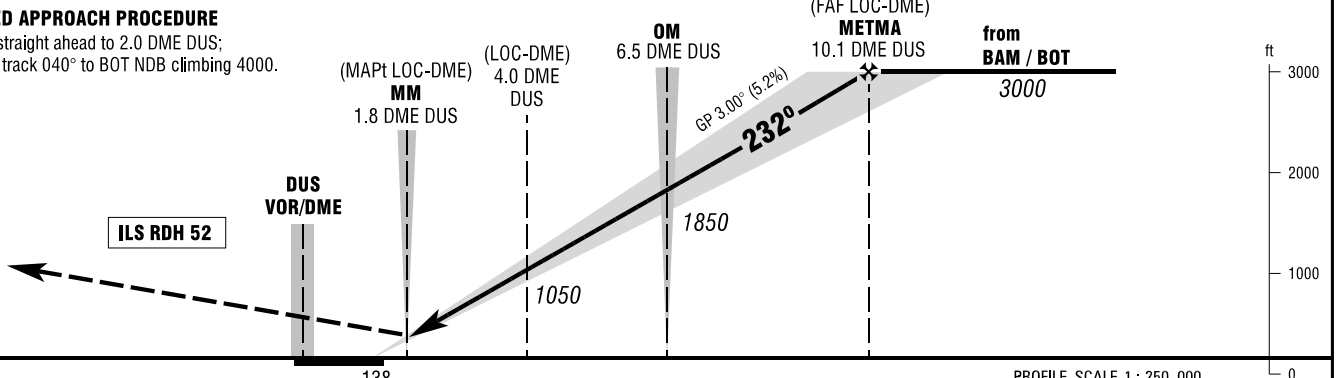
ATIS	123.775	DIRECTOR	128.650
LANGEN RADAR	115.150 (DUS)	TOWER	118.300
	133.775	GROUND	121.900
	128.550	DELIVERY	121.775

DÜSSELDORF
 ILS CAT II & III or LOC
 RWY 23L



MISSED APPROACH PROCEDURE

Climb straight ahead to 2.0 DME DUS;
 RT, on track 040° to BOT NDB climbing 4000.



OCA (OCH)	A	B	C	D	D _L
ILS CAT I	285 (147)	295 (157)	305 (167)	314 (176)	317 (179)
ILS CAT II	187 (49)	203 (65)	216 (78)	229 (91)	233 (95)
LOC-DME	520 (380)	520 (380)	520 (380)	520 (380)	

DME DUS	3	4	5	6	7	8	9	10
DIST THR	1.7	2.7	3.7	4.7	5.7	6.7	7.7	8.7
ALTITUDE	740	1050	1370	1690	2010	2330	2650	2960

LOC-DME: Timing not authorized for defining the MAPt.

GS	kt	80	100	120	140	160	180
OM - THR (5.2 NM)	MIN:SEC	3:54	3:07	2:36	2:14	1:57	1:44
Rate of descent (5.2%)	ft / MIN	420	530	640	740	850	960

CAT IIIA AND CAT IIIB (MNM RVR 75m) APPROVED.

Correction: Variation change, OCA (OCH), missed approach procedure, tracks.