

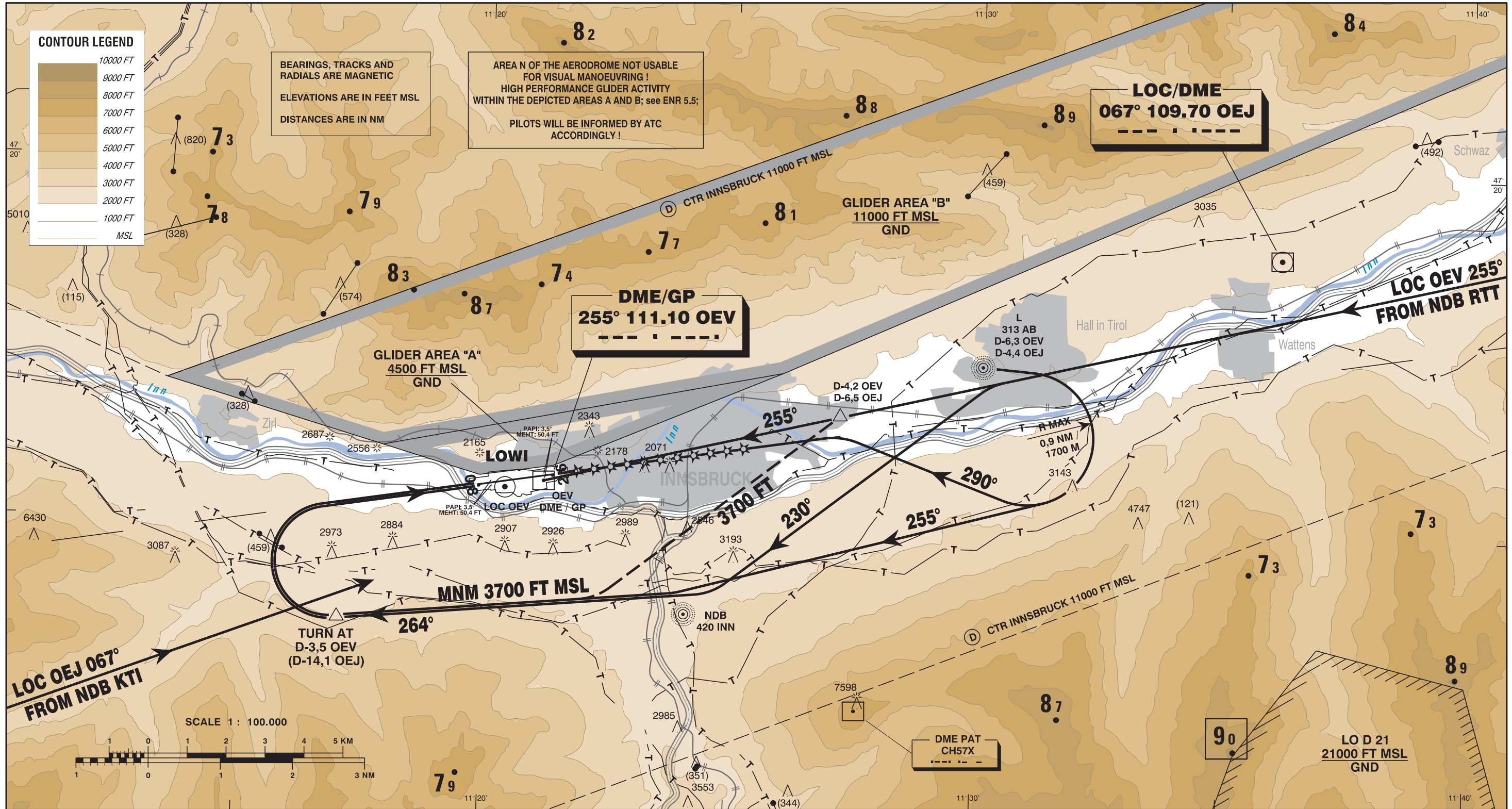
VISUAL APPROACH CHART - ICAO

VAR 2° E

AD ELEV 1907 FT

RADAR 119.275 MHZ
TOWER 120.100 MHZ
ATIS 126.025 MHZ

INNSBRUCK
ÖSTERREICH AUSTRIA



CHANGE: EDITORIAL

OCA CIRCLING					MINIMA IN THE AREA OF VISUAL OPERATIONS		For calculation of flight profile Aerodrome Obstacle Chart - ICAO Type A (LOWI AD 2.24-2-1) and Aerodrome Obstacle Chart - ICAO Type B (LOWI AD 2.24-2-2) shall be used.	
LOC/DME PROCEDURE WEST via NDB KTI	LOC/DME PROCEDURE to RWY 26				SPECIAL LOC/DME EAST to RWY 26	RNP RNAV to RWY 26		FLIGHT VISIBILITY: CAT A AND B 3 KM CAT C AND D 5 KM
	MA-CLIMB GRADIENT							
5000 FT MSL	2,5 %	3,0 %	4,0 %	5,0 %	3700 FT MSL	3700 FT MSL		
	4900 FT MSL	4400 FT MSL	3900 FT MSL	3700 FT MSL				